

BELIZE EXPLORATION

OCTOBER 25 - NOVEMBER 2, 2008

A SPECIAL INVITATION TO THE FNPS



Belize offers such a variety of sights and activities that a visit becomes a great, unforgettable adventure.



The many natural wonders of Belize invite you to walk slowly, stop, look and listen...

Explorations Inc., is proud to once again offer a custom educational travel experience specifically to the members and friends of the **Florida Native Plant Society!** This 2008 nature adventure highlights some of the very best that Belize has to offer.

Since many living in Florida are familiar with mangrove and coral keys environments, we have designed an itinerary that focuses on ecosystems in Belize that offer greater contrast to Florida's. We will explore inland environments such as rainforests, tropical broadleaf forests, savannas and the pine forests of the mountain pine ridge area. We have also purposely minimized travel time by staying in only 3 locations, allowing for a more in-depth look at particular regions, rather than skipping around with a tour that just hits the traditional highlights.

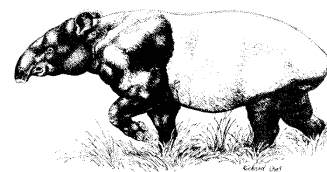
Belize is a small country, but also one of great ecological diversity. Formerly British Honduras until 1973, its official language is English. It is a tropical blend of Caribbean and Latin. Slightly larger than Massachusetts, it only has a population of about 300,000, making it the least populated Central American country and one of the lowest in the world.

Approximately 60% of Belize remains forested, with 3,408 species of vascular plants in 209 families and new species being discovered nearly every year! Over one-third of its land area falls under some form of official protection. Savannas, scrublands and wetlands constitute extensive parts of the nation's land cover. As a result, the biodiversity is rich with a host of flora and fauna. In this unique country there are more than 500 species of

birds. Colorful toucans, fiery scarlet macaws and even the jabiru stork with its five foot wing span inhabit Belize. Although rarely seen, five species of cats- jaguar, puma, ocelots, jaguarundis and margays also live here. In the wild, you will have a better chance of viewing monkeys, kinkajous, colorful tree frogs and a plethora of beautiful butterflies, birds, and strange looking insects.

The friendly people of Belize make the country a true "melting pot" of cultures. Most Belizeans speak English, the official language, but also commonly heard languages include Creole (or English patois), Spanish, Garifuna, three Mayan languages, Mennonite German, Chinese, Lebanese, Hindi, and even traces of southern drawl from descendents of past refugee Confederates!

Imagine... looking into a face carved in stone hundreds of years ago while hearing the daunting calls of nearby howler monkeys! The exploration has a strong focus on learning about the different geographical areas and ecosystems visited. The goal is to explore the country's diversity with an itinerary that is conducive to the discovery of nature's secrets and to achieve a better understanding of the Belizean peoples.



Central American Tapir,
The National Animal of Belize

ACCOMMODATIONS

Your three jungle lodges have been chosen for their charm and strategic locations. Belize has some of the most extensive tracts of primeval rainforest in Central America. These forests are inhabited by healthy populations of some of Tropical America's rarest and most beautiful creatures including the jaguar, ocelot, gray fox, black howler monkey, Central American spider monkey, tapir, peccary, red brocket and white-tailed deer, agouti, paca, Mexican porcupine, scarlet macaw, jabiru stork, toucan, ocellated turkey, harpy eagle and many others. We do not guarantee you will see them all, but you will be staying in locations that give you excellent opportunities.

Cohune Palms River Cabanas (www.cohunepalms.com) for a 3 night stay, located in western Belize in the mountain pine ridge area. Just two and a half miles from San Ignacio, adjacent to the small village of Bullet Tree Falls at the base of the Maya Mountains. Set apart from the village on a peninsula of the Mopan River, your accommodations are blessed with cool river breezes and a jungle setting.

Cohune Palms features a private restaurant with outdoor dining and thatched-roofed cabanas, with private bathrooms, electricity, ceiling fans, hot water, and verandahs. Set amidst lush palms, the comfortable cabanas overlook the lazy, river below. In addition to resting in a hammock, swimming, jumping off the rope swing, or watching iguanas; you can even check your email on their computer. There are plenty of hammocks available for lounging, and a large deck overlooking the river with lawnchairs and ropeswing.

Construction of Cohune Palms began in 2001 on land that has been in the Waight family for generations. The owners are Mike (a native Belizean, an accomplished artist, craftsman, and musician) and Bevin (from Idaho, a MA graduate in Anthropology). The staff includes Alba and Melanie, who serve up delicious meals utilizing the local Creole and Mayan cuisine as a base. Curry chicken, tamales with rice and beans, fresh snapper filet, fajitas with homemade corn tortillas, black bean and chayta casserole and coconut shrimp are just a few of the dishes served. Breakfasts include large breakfast burritos, granola with yogurt and fresh fruit, french toast, fry jacks, omelettes and more. All meals include fresh juices and coffee and tea with breakfast. Beer, wine, and soft drinks are also available.

Pook's Hill Lodge (www.pookshilllodge.com) for a 3 night stay, located in the foothills of the Maya Mountains in the Cayo District of Belize. The lodge is situated within a 300 acre Private Reserve, on the site of an ancient Maya Plaza Group. This, coupled with its unparalleled position in the very heart of the country, makes Pook's Hill a perfect base of operations. Its own reserve of primary rainforest borders on the Tapir Mountain Nature Reserve, a 6,800 acre sanctuary managed by the Audubon Society of Belize - which is home to colorful toucans, butterflies, hummingbirds, howler monkeys and jaguars. Nature trails in the reserves take you past giant Mahogany, Cedar, Strangling Fig and Ceiba. The forest is the home to the tapir, jaguar, coati mundi, gibbon, and a myriad of birds.

Your thatched cabanas surround a Maya archaeology site and overlook the forest and creek below. Each cabana has a private bathroom, electricity and fan. The bar/veranda is ideal for birding or just relaxing in the tranquil setting. Nearby is the clear water of the Roaring River cascading down a 1000 feet of fall in the Maya Mountains. Pook's Hill has two miles of frontage on the Roaring River, perfect for tubing or cooling off in one of the hidden jungle pools.

Pook's Hill has been endorsed by ornithologists as being in a league of its own. The birding from the lodge veranda, the meadows and along the riverside is superb. Birders can enjoy miles of forest trails, river walks and open landscape. Hummingbirds give a spectacular display at the veranda and there are good sightings of trogons, motmots, toucans and most of our forest species. Activities at the lodge include birding, horseback riding, hiking, river tubing and swimming. The lodge is walking distance from the cave, Tunichil Mucnal, the most adventurous caving expedition in Belize.

At the heart of the Pook's Hill property is a Maya residential complex dating mainly to the Terminal Classic Period (ca.830-950 AD). Exploration of the cultivated fields and jungle around the resort has also revealed a whole Maya settlement landscape. Architecture and artifacts from Pook's show signs of long-distance contact with central Mexico (Teotihuacano ceramic styles, green obsidian, and a circular shrine) and with the Caribbean coast of Belize (parrotfish and the incised Hawksbill turtle piece).

Lamanai Outpost Lodge (www.lamanai.com) for a 2 night stay, is situated on the banks of a 28 mile long, spring fed lagoon amid the remnants of a major Maya city. It is surrounded by an incredible variety of habitats that facilitate unsurpassed nature activities. It's remote location provides the Lamanai Outpost a world of its own.

The Lamanai Outpost has twenty Cabanas, with private bathrooms, ceiling fans, even a mini-fridge, and a relaxing verandah to catch the prevailing breeze that comes in from the lagoon. Lamanai Outpost has been repetitively featured on shows such as Wild Things, Discovery, Animal Planet, National Geographic Explorer and World Gone Wild. Voted Belize's Hotel of the Year for 1999/2000, the Outpost is consistently utilized by high-end travelers and is widely recognized as one of Belize's finest jungle lodges. Their meals consistently receive excellent guest comments.

With almost 400 species documented within a 3 mile radius, the Lodge is definitely one of Belize's premier birding locations. Habitats range from vast wetlands and broadleaf forest to pine savannah and all are easily accessible by boat, trails, vehicle or canoe. The Spotlight Safari provides an amazing opportunity to see roosting waders, nocturnals and some of the more elusive diurnal species up close and personal. Regular sightings include the Northern Potoo, Yucatan Nightjar, Common Pauraque and Nighthawk, Grey-necked Wood Rail, Sungrebe and Agami Heron. Also around the lodge you may observe (and hear) troops of Howler monkeys as they start the day foraging high in the jungle canopy.



FNPS BELIZE EXPLORATION

9 Day/8 Night Itinerary

Day 1, Saturday, October 25, 2008:

All participants are to meet midday at the Miami airport for the flight to Belize City. Upon arrival in Belize, you will be transferred to the Cohune Palms Riverside Cabanas in western Belize for a 3 night stay. A welcome dinner is planned for orientation and more introductions. (D)

Day 2, Sunday, October 26:

Morning tour of the nearby Masewal Forest Garden Trail to learn about plants important to the Maya both long ago and in present times. We will learn about the variety of uses of each plant in addition to about local wildlife and the Maya themselves. Featured along the trail is an ancient Maya quarry and a series of Maya mounds, including a large temple which has been looted. Thirty-one years ago, Don Heriberto Cocom, a Yucatec Maya bushmaster (or herbalist) created this special place where each plant serves a purpose; used as medicine, food, thatch, fiber, because it attracts butterflies, birds, and mammals, or just because of its beauty. The trail was created in 1999 by a collaborative effort between Don Beto, Amigos de El Pilar, Raleigh International, and the BRASS/El Pilar Program. It has 318 species of flowering plants, 250 of which are native to Belize, about 15 percent of the indigenous floristic diversity of the country. Masewal means "the people" in Nahuatl, and it is a declaration, after years of colonialism and exploitation by foreigners, that this land once again belongs to the native Maya people. Don Berto is a guardian of the Yucatec Mayan language that coevolved with this forest. The fragile relationship between the two—language and biodiversity—is one of mutual salvation. Afterwards for the return, you can enjoy floating in a tube down the Mopan River back to the lodge!

In the afternoon is a relaxing canoe outing through the jungle on the scenic Macal River where you are likely to spot basking Iguanas, while passing by high-rock-wall formations, as you slowly make your way downstream.

Later is a visit to Xunantunich, a Classic period Maya site where the major monuments have been excavated and reconsolidated, offering a good glimpse of what the Mayan temples might have looked like at one time. The largest structure, El Castillo, stands 130 feet high and offers an excellent view of the surrounding area. (B/L/D)

Day 3, Monday, October 27:

For the "early birds", before breakfast is an optional hike on surrounding area trails to enjoy sunrise in the forest and for birding, plants, and wildlife viewing.

After breakfast is a visit into the Maya Mountains to El Pilar Reserve, with its massive ruins of an ancient Maya city. The site is approximately 5 times the size of Xunantunich. It is believed that at around 700-1000 AD approximately 18,000 people lived in the area. Excavations

have been ongoing and have left parts of the architecture exposed for visitors. El Pilar Reserve is the product of a unique management plan that seeks to keep the buildings largely unexposed in order to preserve both the jungle canopy and the monuments themselves. El Pilar retains the aura of a lost ancient city that one might discover as it is intact in its natural surroundings, replete with howler monkeys, toucans and jaguars. The site has at least three large sections that straddle the Belize-Guatemala border and are interconnected by causeways, one of which is almost 100 feet wide with walls along both edges. So far archaeologists have identified more than 25 plazas covering more than 100 acres and more than 70 major structures. Currently there are five trail systems, three archaeological and two primarily nature trails.

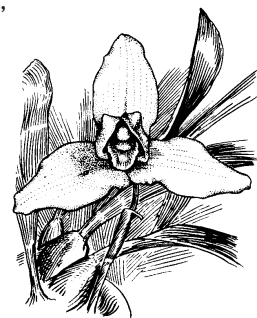
In the afternoon is a botanical tour of the Ix Chel Farm and its Panti Medicine Trail on the shores of the Macal River. The Belizean government officially established this (world's first) medicinal plant reserve in 1993. The 6,000 acre reserve, dedicated to the preservation of potential lifesaving herbs, is called the Terra Nova Medicinal Plant Reserve. Seedling plants "rescued" from rainforest areas in danger of destruction from development are sent to Terra Nova for transplanting. The reserve is run by the Belize Association of Traditional Healers. The trail is named after the late Don Eligio Panti, a master healer and teacher of traditional Mayan medicinal cures who lived until the ripe old age of 103! (B/L/D)

Day 4, Tuesday, October 28:

After breakfast and departure, a drive through a picturesque Mennonite farm community takes you to Barton Creek for a unique cave and mile long canoeing excursion. In canoes equipped with powerful spotlights you will float through a remote underground water cave system, complete with large and colorful formations, skeletal remains, and other cultural artifacts left behind by the Maya centuries ago in the cathedral-like caverns.

Later is a visit to Green Hills Butterfly Ranch and Botanical Collections. Flocks of dazzling butterflies fly freely in 2,700 sq. ft. of beautifully landscaped flight area, the largest live butterfly display in Belize. The Botanical Collection maintains living collections of several groups of plants, important to the butterflies, either as nectar plant or caterpillar food plant - including Passionflowers, Bromeliads, Cycads, Heliconia's, Aristolochia's and orchids.

Later you transfer to Pook's Hill Lodge in the central Belmopan area for a 3 night stay. After orientation and dinner is a night walk in Pook's Hill Nature Reserve for nocturnal wildlife and insect life. (B/L/D)



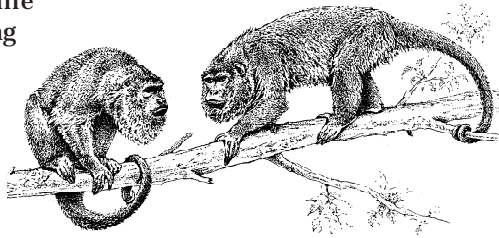
(Itinerary continued)

Day 5, Wednesday, October 29:

Before breakfast is a optional sunrise hike in the surrounding reserve for flora and fauna viewing.

After breakfast is a extraordinary excursion at Cave's Branch. Floating on inner tubes, you will enter an exciting realm where rivers disappear into the underworld. Entrances from above, filter mists of jungle light, as you float through underground river caves that sparkle with mica-studded stalactites and stalagmites filled with 1,000 year old pottery shards, statues of fertility gods and Mayan footprints. Past an underground waterfall leads you into the "Crystal Cathedral", a spiritual place used by the ancient Maya. Some underground hiking and jungle trekking is required.

In the afternoon is time for relaxing at the jungle lodge, birding, or tubing & swimming on-site at Pook's Hill Roaring Creek. (B/L/D)



Day 6, Thursday, October 30:

In the morning is a tour into Guanacaste National Park, a fifty acre parcel of tropical forest. The park is named for the giant guanacaste (tubroos) tree growing near the southwestern edge of the park. In addition to the Guanacaste tree, there are numerous other species of trees labeled throughout the park. Although the mammal population is rather small, over one hundred species of birds have been identified within the park. Guanacaste Park offers a relaxing introduction to the tropical forests of Belize with its well marked and maintained trails.

Later is a visit to the Belize Zoo and Tropical Education Center. Set upon 29 acres of tropical savanna, it exhibits over 125 animals native to Belize. The Zoo was founded in 1983 as a retirement home for natural history "movie stars." It keeps animals which were either orphaned, born at the zoo, rehabilitated animals, or sent to The Belize Zoo as gifts from other zoological institutions. Whenever possible, all wildlife that can be rehabilitated are reintroduced to their natural environment. Those animals that cannot be reintroduced are maintained in a natural setting at the zoo, where they become an integral part of an ongoing program to educate people about the natural history of Belize.

The afternoon is free for relaxation, swimming in the river, or more explorations in the lodge's surrounding forest. (B/L/D)

Day 7, Friday, October 31:

After breakfast and departure, we transfer by road to the northern part of the country to the Orange Walk District. There we boat on the New River with nature viewing enroute to the waterfront Lamanai Outpost Lodge for a 2 night stay. In the afternoon we explore the Outpost grounds and surrounding rainforest.

After dinner is a night spotlight safari by boat on the New River Lagoon. This exciting adventure gives you the opportunity to encounter anything from the Morelet's

crocodile to the elusive and endangered jaguar. Also an opportunity for close up views of some of Belize's fascinating river birds as they roost on the water's edge, such as Pygmy Kingfishers, Grey-necked Wood-Rails, Purple Gallinules, Herons, and Limpkins. We may also be fortunate to see a Tyra, Mexican Hairy Porcupine, and possibly one of several species of opossums. (B/L/D)

Day 8, Saturday, November 1:

In the morning is a tour of the adjacent Lamanai Archaeological Reserve. The ancient Maya ruins seem to pop out from the treetops as you arrive at the site. After visiting the museum, we walk through the dense jungle, past gigantic guanacaste, ceiba, ramon tress, strangler figs, allspice, epiphytes and maybe Belize's national flower, the black orchid, to explore the massive site. In the overhead canopy, you might hear and see one of the groups of residents howler monkeys. Of the 700

buildings within the complex, less than five percent have been excavated and explored. The grandest rises more than a 111 feet above the jungle canopy. You will see the famous stylized mask on the Mask Temple, the Jaguar Temple, and by climbing the High Temple, you have a panoramic view across the surrounding jungle and lagoon. Lamanai was one of the oldest and longest continuously occupied Maya cities (about 1500 BC to 1675 AD) probably due to its location on a major trade route, the New River. With a population exceeding 35,000 at the height of the city's power, Lamanai's trading influence extended over the borders of present-day Guatemala, Honduras, Mexico, and Belize. During the Spanish conquest of Yucatán, Spanish friars established two Roman Catholic churches here. In 1640, the Maya rebelled against the Spanish influence and burned the churches to the ground. After the Spanish were chased away, a series of epidemics eventually weakened the city and finally put an end to 3000 years of social, political, and cultural dominance within the region.

In the afternoon is a visit nearby Indian Church Village to learn of their Community Enhancement Project with its artisan center, library, & more. About 280 people reside in the village, named for the historic Spanish churches recovered among the Maya ruins. The residents lived among the ruins until 1991.

Your last night in the jungle to listen for the owls and bats that come out to hunt and gather, and to the troupes of Howler monkeys speaking to each other across the canopy. The sounds come from everywhere as many species such as frogs and tarantulas, some mammals and species of birds thrive in the late hour of the evening and night. A farewell dinner recaps the adventures. (B/L/D)

Day 9, Sunday, November 2:

In the morning, we transfer by boat and road to the Belize City airport for the midday flight out to Miami. (B)

INCLUDED IN TRIP COST

✂ The total trip price is **\$3,300 per person, based on double occupancy and includes the international airfare from Miami** on American Airlines. (Estimate \$100 to \$200 dollars for connecting add-on airfare from various major cities.) A single supplement is an additional \$500.

✂ **Local, experienced guides** will also accompany you. The local guides are multilingual and are capable of providing a wealth of information. The local guides and staff help open a window through which to see a different world.

✂ **All group transfers** and transportation in Belize.

✂ **All meals in Belize**, starting with dinner on Day 1 and ending with breakfast on Day 9. (See B, L, or D on itinerary.)

✂ **All lodging in first class accommodations.**

✂ **All side trips, day trips, entrance fees**/donations to forest reserves, and activities as described in the itinerary

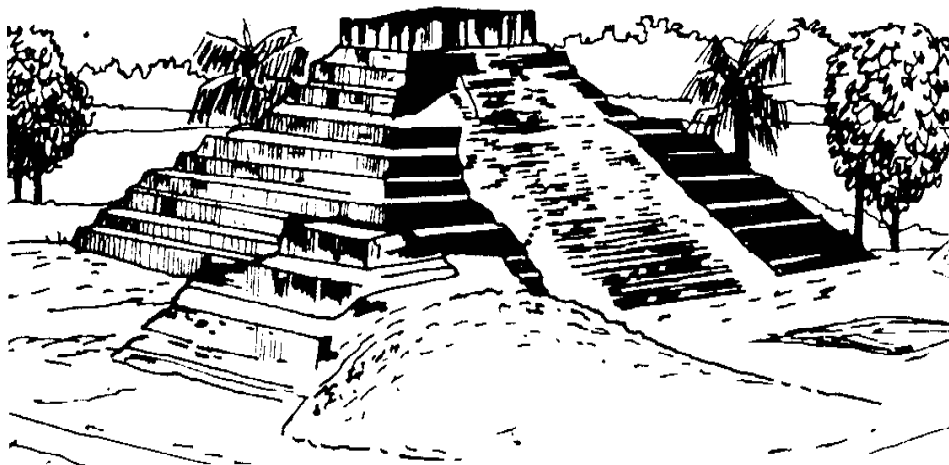
NOT INCLUDED

✂ Belize airport departure taxes (Estimate \$35, to paid direct upon leaving Belize in USD or local currency.)

✂ Personal items and alcoholic drinks.

✂ Gratuities to local guides and personnel.

✂ Meals not listed in itinerary.



FNPS

This Belize Exploration has been customized specifically for the Florida Native Plant Society. The president of Explorations Inc., Charlie Strader, is a Florida resident and being like minded, is pleased to make this educational program available to fellow FNPS members and friends. Explorations Inc., will make a donation to the FNPS in behalf of each participant.

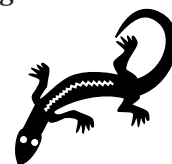
WHO GOES ON THIS ADVENTURE?

This trip is a great educational adventure for people of all ages and backgrounds. Single travelers, friends, families and couples can all enjoy this program. Anyone with an interest and appreciation of nature will find this a worthwhile and fascinating experience. You do not have to be a wilderness camper or marathon runner as it is not a designed to be physically difficult trip, but some outings will require hiking on rough terrain. Although this is far from a "Survivor Series", be assured, you are not going to a modern, man-made theme park; there may be rain and mud in a rainforest. You will find that you have a lot in common with your fellow travelers, as you share a spirit of adventure, are active, inquisitive, outdoor oriented, and have a strong interest in the world of nature and other cultures.

Explorations Inc., is committed to providing quality adventure travel experiences and excellent personal service. By means of informal education and well paced travel, our goal is to facilitate a better understanding of the natural world and of cultures past and present. Explorations of distant places may not only teach us more about different cultures, we may also learn more about ourselves.

Explorations, Inc. is a member of the International Airlines Travel Agent Network. We are registered with the State of Florida as Seller of Travel #15176. Our California Seller of Travel registration number is 2021110-40. Client and professional references are available upon request.

Our Email address is info@ExplorationsInc.com and you can find us on the Internet at: <http://www.ExplorationsInc.com>. **On the internet, you may also view photos of Belize** and our main **PhotoGallery**.



BELIZE TRAVEL INFORMATION

How do I get there?

The roundtrip international airfare to Belize City from Miami is included in your tour cost. Explorations has blocked space for the group on American Airlines to secure a low rate for all and so all are on same international flights. The 18 available seats will be allocated in the order deposits are received. Deposits must be received by July 4th to hold the fare. American Airlines has add-on connecting fares from various cities (estimate \$100 to \$200), for which we can provide a quote if noted on registration form. Although we have a contracted fare rate, Explorations is not responsible for any increase in fuel surcharges or taxes by the airlines.

The flights selected should allow time for connections to Miami are:
October 25 AA#2173
Miami > Belize 2:05pm > 2:05pm
November 2 AA#2172
Belize > Miami 12:35pm > 3:30pm

What about airport taxes?

The USA airport departure taxes are prepaid on your international air ticket. The Belize departure taxes (currently \$32.50) cannot be prepaid on your air tickets and must be paid in cash (in either US or local currency) upon leaving. All taxes are, of course, subject to change by respective parties.



Are you traveling alone?

If you do not have a roommate and are willing to share, please note on the reservation form. Roommates are assigned on a compatible, first come basis. If a roommate is found after the initial registration, the single supplement charge will be waived or reimbursed. If you definitely want single accommodations, the single supplement charge is \$500.

How is the weather ?

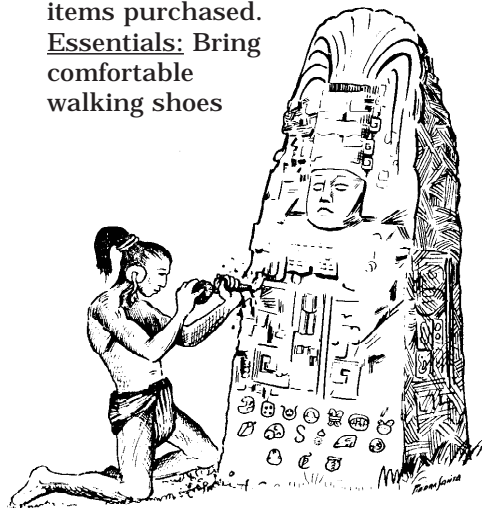
Belize has a subtropical climate, not unlike South Florida. The rain and temperature vary by geographic region, altitude, and season. As in Florida, the weather becomes cooler and dryer by the end of October. We are traveling at a time in between the wet and dry seasons, so we should have the best of both times, with lots of green without a lot of rain unless a late tropical storm develops. Depending on the area, time of day, wind and sun factors, the temperature may range from the 50s°F to the lower 90s°F, with an average of 77°F. Wear layered clothing so you can adjust to changes. Be prepared for rain during the trip by having a light raincoat or poncho. Plastic bags are handy to cover camera equipment and store wet swimsuits. With a few

cuts, large plastic bags can even be modified into an emergency poncho. (Rain in the tropics can be a great experience and well worth the inconvenience!)

What do I bring ?

Passport and money: A current Passport is required (*check the expiration date, it must be valid for 6 months after tour return date*). Visas are not required ahead of time for US citizens, as you will be issued a 30 day tourist visa upon arrival in Belize. Whenever traveling, we strongly recommend that you keep your passport, credit cards and the bulk of your monies in an under-the-clothing traveler's purse or belt. Keep a photocopy of your passport's first two pages (3 copies are best), credit card, etc., in a separate location for safety. You can exchange some money in the Miami airport or wait until arrival in Belize. Small (undamaged and without ink marks) US bills are easy to use and exchange. Baggage: You may want to try and keep baggage to a minimum, as traveling light always seems to make things easier. We recommend one piece of luggage and one carry-on bag per person. The carry-on can be used to safeguard valuables during the flights and later as a day pack during outings. It is handy to have a fold-up bag inside one of them (or bring down with old clothes to give away) for items purchased.

Essentials: Bring comfortable walking shoes



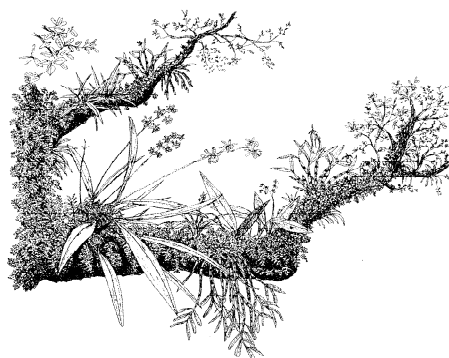
TRAVEL INFORMATION - CONTINUED

(tennis shoes are fine), extra pair of shoes or sandals, rain-gear, a hat, a swimsuit, 1 or 2 small flashlights with extra batteries, sunscreen, sunglasses and mosquito repellent. A washcloth/bandana when traveling is often handy. A small plastic bottle for water (which you can also get upon arrival), to keep in your day pack, is a good idea.

Clothing: Bring comfortable clothes that can be layered. Since much of the time is spent outdoors, casual dress is appropriate. Lightweight materials are best for the tropical climate as they wash and dry quicker. Basic laundry service may be available at the some locations. A more detailed list to assist in packing will be provided. *Most important: bring a good attitude and adventurous spirit.*

What about health?

No immunizations are required for US citizens coming from the USA. Whenever traveling abroad or not, you should check if your tetanus vaccination is current and consider the Hepatitis A & B vaccinations. The basic guidelines of good hygiene and common traveling sense, needed for any away-from-home trip, will help insure a healthier vacation. Some good guidelines are: If in doubt, drink only bottled or purified water. (Safe water is provided at all locations.) If desired, bring Lomotil, antibiotics from your doctor and/or Pepto Bismol for symptoms. Avoid insect bites. (Skintastic & Deep Wood's Off pump spray is recommended.) Malaria is rare but present in Belize (however, we do not frequent high population areas) and some doctors will recommend taking chloroquine as a Prophylaxis. Bug spray and long sleeves is recommend just prior to and after sunset (the most active



time for mosquitoes). Wash your hands frequently. Watch your step. Do not get sunburned.

Important Note: Most homeowners and medical insurance policies do not cover you abroad. Although not required, we *strongly recommend* that you purchase special travel coverage. Please consider protecting your travel investment, if for no other reason, remember that late October is still in the "official" Hurricane season. Upon registration we will send brochures for such travel insurance. Your general welfare is very important to us. Call the office if you have any concerns or questions.

What about electricity and money?

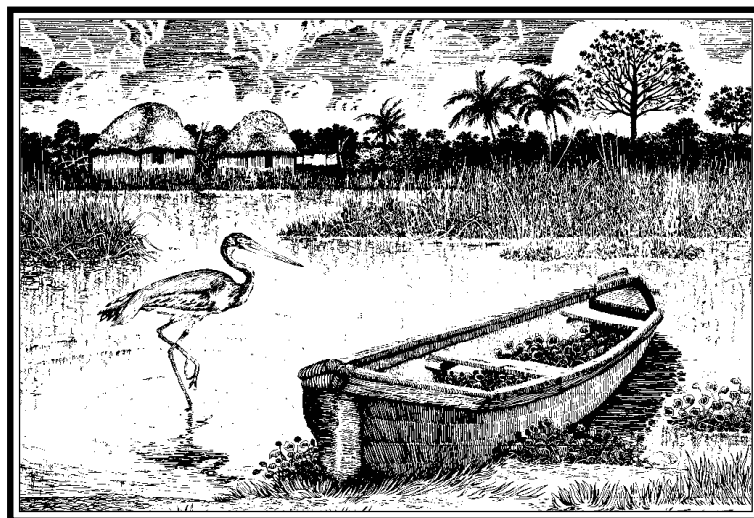
The voltage is 110 volts, the same as the USA and no adapters are needed. The Belize dollar is fixed at \$2 BZ per \$1 US. The US dollar is widely accepted. All major credit cards are accepted with Visa and Mastercard being the most widely used. Belize's telecommunication system is reliable and AT&T, Sprint, and MCI are all easily accessed (check with your service) and Internet access is

available at some of the properties. Do not forget extra film (or memory sticks) and camera batteries as they are often difficult to find and expensive. Bring sealable plastic bags to protect equipment and supplies from moisture.

What about pretrip literature?

Upon receipt of deposit, you will be sent an invoice showing receipt of such and balance; along with a suggested reading list, travel insurance pamphlets and detailed medical information. Upon receipt of your balance (due 60 days prior to departure), you will receive a paid-in-full statement, along with a trip update with airport check-in procedures, suggested packing list and luggage tags. Before departure you will receive your Trip Folder containing airline tickets, rooming lists, educational handouts, bird/wildlife checklists, maps, etc.

Please remember that you will be in environmentally sensitive areas and restrain from buying souvenirs made from protected or endangered species. Also, please be respectful of different cultures and no littering.
Thanks!



RESERVATION FORM

FNPS BELIZE EXPLORATION

TO REGISTER:

Complete and sign form below (or copy of) and send with a check (credit cards not accepted)
for appropriate deposits, made payable to:

EXPLORATIONS INC., 27655 KENT RD., BONITA SPRINGS, FL 34135

Full payment is due 60 days prior to departure. Upon receipt of your deposit, an invoice will be sent showing your balance and due date. Please verify all information and call if you have any comments or questions.

TRIP DOCUMENTS: A current Passport is required (verify that expiration date is valid 6 months after tour return date. If you do not have your passport number at time of registration, you can call it in at a later date. Visas are not required for US citizens. You are welcome to contact Charlie Strader of Explorations Inc. at **800-446-9660** with any questions.

Name(s): (As per passport.)

1. _____ Email: _____

Passport Country & # _____ Birthdate _____ Occupation _____

2. _____ Email: _____

Passport Country & # _____ Birthdate _____ Occupation _____

Address _____

City _____ State _____ Zip _____ Phone () _____

ACCOMMODATIONS:

I will share with _____ . I prefer single accommodations available.

Please arrange a roommate if possible. I am Male ___ Female ___

AIR TRANSPORTATION:

Please arrange only the international reservations. I(We) will make own arrangements to/from Miami.

Please arrange connecting air transfers to Miami from _____ (USA city or airport).

DEPOSITS ENCLOSED:

\$400 per person for Belize Exploration. \$500 Single supplement

SPECIAL REQUESTS: _____

** TERMS AND CONDITIONS **

The Florida Native Plant Society (FNPS) and Explorations Inc. and its associates are not responsible for loss due to theft, personal injury, negligence of suppliers, or suppliers changing of itineraries. Explorations Inc. and its associates are not responsible for delays or changes in travel plans due to the weather, natural events, or other unforeseen circumstances, nor is Explorations Inc., responsible for medical care. Tour services are furnished by independent contractors who are not agents or servants of Explorations, Inc. Refunds are not available for unused portions of the tour. **Cancellation fees** per person are: \$100 with notice more than 90 days prior to departure. \$400 at 90-46 days prior. \$400 plus any lost costs to suppliers at 45-0 days prior. If trip is cancelled by Explorations Inc., all received monies will be refunded. **Trip cancellation and emergency medical insurance is highly recommended.** If you have any questions regarding these terms or would like professional or client references-please call!

SIGNATURE(S) _____

_____ DATE: _____

